

# ASPIRANTE

## ***FERVORE***

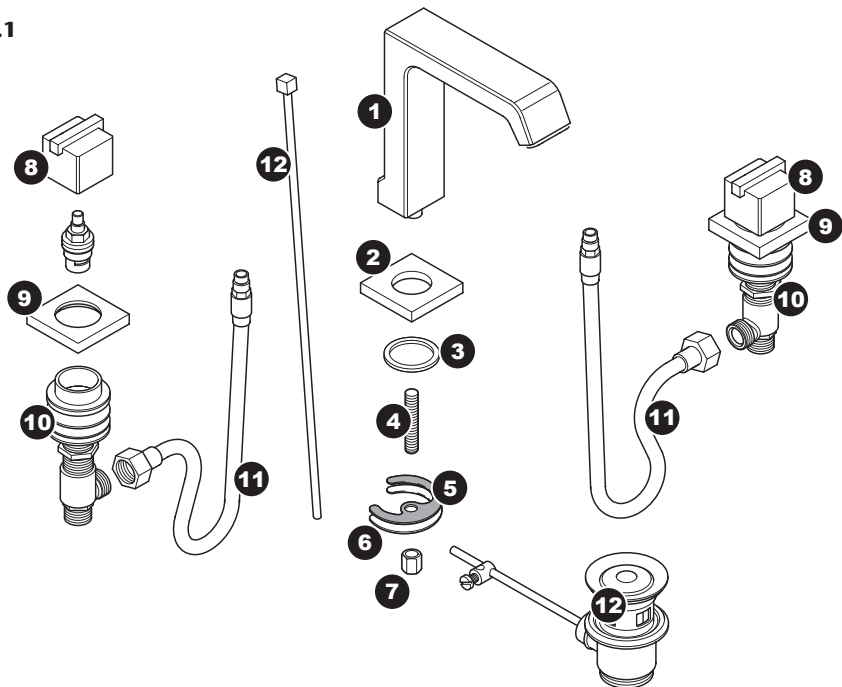
***Three-hole basin tap***



## **Installation and Operating Instructions**

INSTALLERS PLEASE NOTE THESE INSTRUCTIONS ARE TO BE LEFT WITH THE USER

Fig.1



## INTRODUCTION

This guide contains all the necessary fitting instructions for your Aspirante Fervore 3-hole basin tap.

**Note:** The Fervore basin tap is suitable for use with 3-hole style basins only.

Please read this guide carefully before beginning your installation.

The mixer tap installation must be carried out by a suitably competent person and in the sequence specified in these instructions. Care taken during the installation will provide a long life and trouble free operation from your mixer.

**DO NOT choose a position where the mixer could become frozen.**

Replacement parts can be ordered from Triton Customer Service (see back page).

## COMPONENTS

The tap set comprises the following items:

1. Tap spout
2. Tap spout base
3. 'O' ring
4. Stud
5. Rubber horseshoe washer
6. Horseshoe plate
7. Brass locknut
8. Tap handle
9. Tap handle base
10. Tap assembly
11. Flexi hose
12. Waste gate assembly, including:
  - Retaining nut
  - Control lever
  - Fixing block

Check that all parts are correct.

## SITE REQUIREMENTS

### WARNING!

**The mixer must not be positioned where it will be subject to freezing conditions.**

This tap is suitable for high water pressures only and should be fitted in accordance with Water Regulations.

Running pressure — 1.0 bar to 5 bar.

Static pressure — 10 bar

Maximum temperature — 85°C.

Recommended temperature — 60 to 65°C.

## INSTALLATION

### Fitting the spout

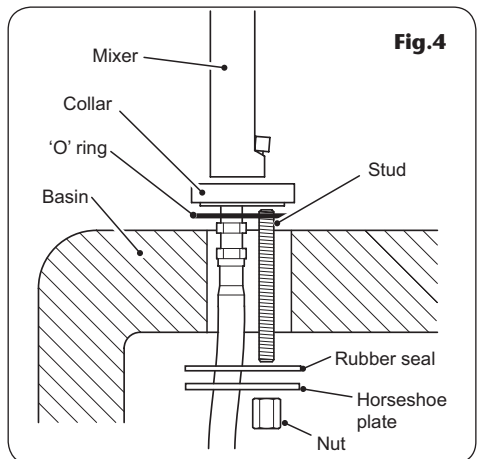
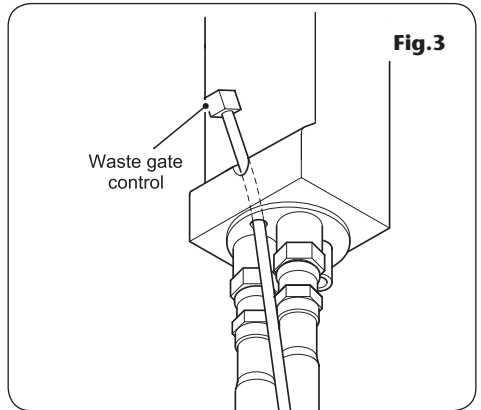
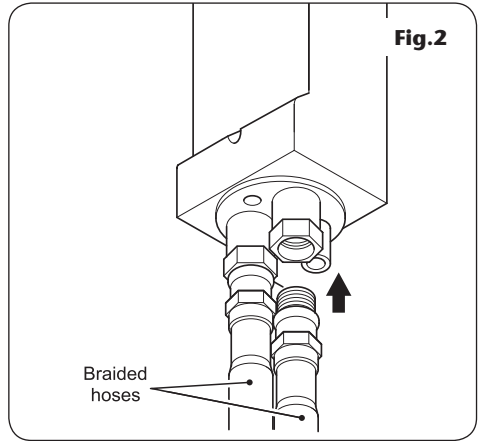
Screw the two steel braided hoses to the inlets in the base of the spout (**fig.2**).

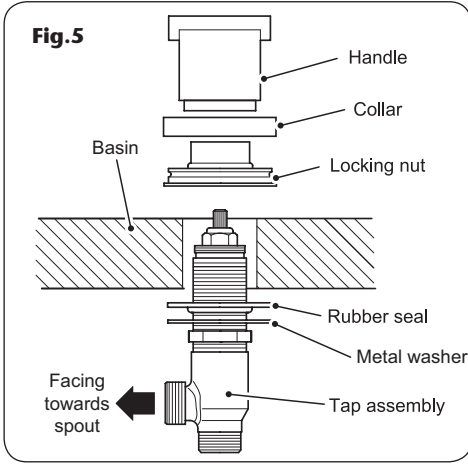
Slide the waste control lever through the opening in the rear of the spout base (**fig.3**). Screw the retaining stud into the base of the spout.

Make sure the tap spout base and 'O' ring correctly locate with the bottom of the spout and with the central pre-cut hole on the basin (**fig.4**).

From the underside of the basin, slide the rubber horseshoe washer and horseshoe plate onto the threaded boss at the base of the spout.

Screw the brass locknut onto the threaded boss and tighten fully to secure the spout in position.





### Fitting the taps

**Note:** The fitting procedure is identical for each tap.

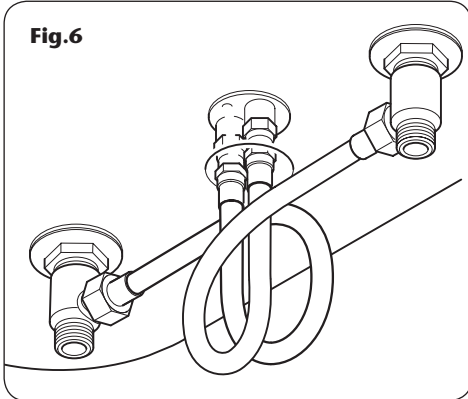
From the underside of the basin, insert the tap assembly, rubber seal and metal washer into the pre-cut hole in the basin with the rubber seal on top of the washer (**fig.5**).

From the top of the basin, screw the locking nut onto the tap assembly. Align the tap so that the tap outlet faces towards the spout (**fig.5**), and tighten the locking nut to secure in place.

Loosen the small grub screw in the tap handle base and fit onto the locking nut. Adjust the position and tighten the grub screw to secure.

Slide the tap handle onto the spindle at the top of the tap assembly. Using a suitable Allen key, tighten the small grub screw in the base to secure.

Repeat for the remaining tap assembly.

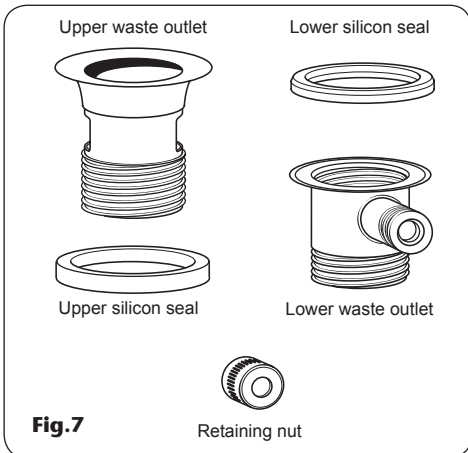


### Connecting the hoses

Connect the steel braided hose on left-hand side to the left-hand (HOT) tap assembly and tighten securely (**fig.6**).

Connect the steel braided hose on right-hand side to the right-hand (COLD) tap assembly and tighten securely.

**Note:** Connect the hot water pipe to the left-hand tap and the cold water pipe to the right-hand tap.



### Fitting the waste unit

Remove the plunger. Take the waste assembly apart as shown in **(fig.7)**.

Slide the upper silicon seal onto the upper waste outlet and fit the lower silicon seal onto the lip on the lower waste outlet **(Fig.8)**.

Insert the control lever through the opening in the side of the lower waste outlet **(Fig.8)**. Fit the retaining nut and tighten. Finger tight should be sufficient.

Place the upper waste fitting into the drainage hole. From the underside of the basin, screw the lower waste outlet onto the upper waste outlet — DO NOT tighten at this stage.

Position the lower fitting such that the control arm faces towards the rear of the basin. Fully tighten the upper waste unit into the lower waste unit.

Place the fixing block onto the control lever and slide into position such that the circular section of the fixing block can connect to the drainage control rod **(Fig.9)**. Tighten the fixing block screws to secure the control rod to the control lever.

Replace the plunger. To alter the plunger gap, remove the plunger from the waste unit and adjust the position of the screw in the plunger base **(Fig.10)**.

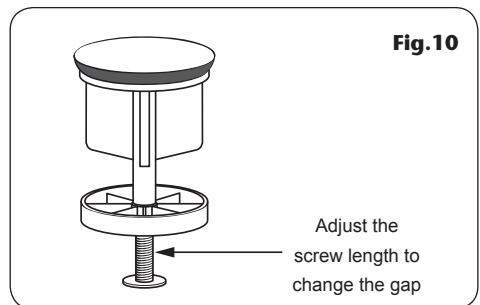
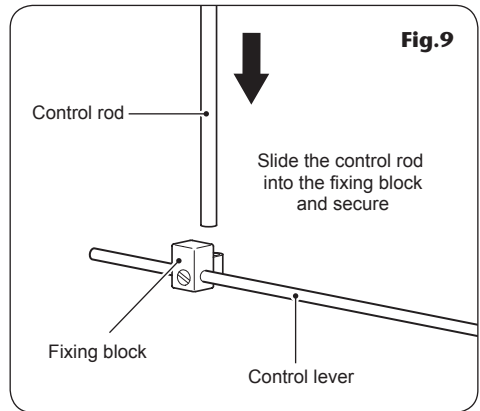
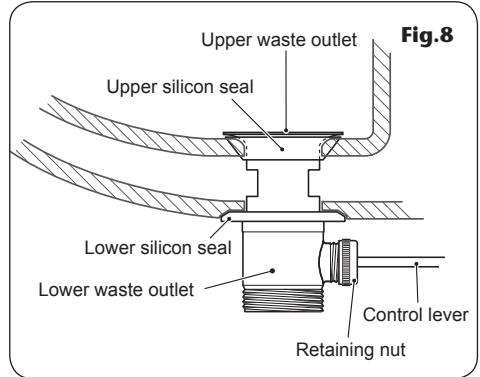
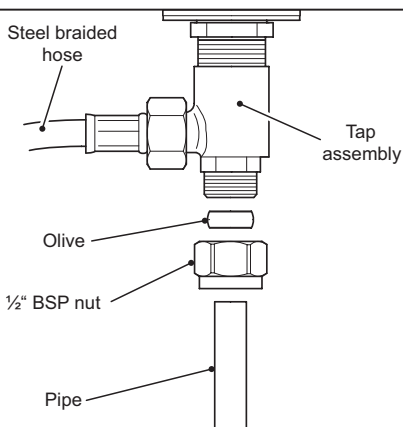


Fig.11



## FINISHING THE INSTALLATION

**IMPORTANT:** Before completing the connection of the water supply to the taps, flush out the system to remove any debris in the pipework. This can be done by connecting a hose to the pipework and turning on the mains water supply long enough to clear the debris to waste.

Use a standard 1/2" BSP nut and olive to connect the incoming COLD supply pipework to the right-hand inlet (**fig.11**).

Again, using a standard 1/2" BSP nut and olive, connect the incoming HOT supply pipework to the left-hand inlet.

## OPERATION

The mixer works by rotating the tap handles to control flow and temperature. The right-hand tap controls the cold water and the left-hand tap controls the hot water. To turn the taps on, rotate anti-clockwise. To turn the taps off, rotate clockwise.

## CLEANING

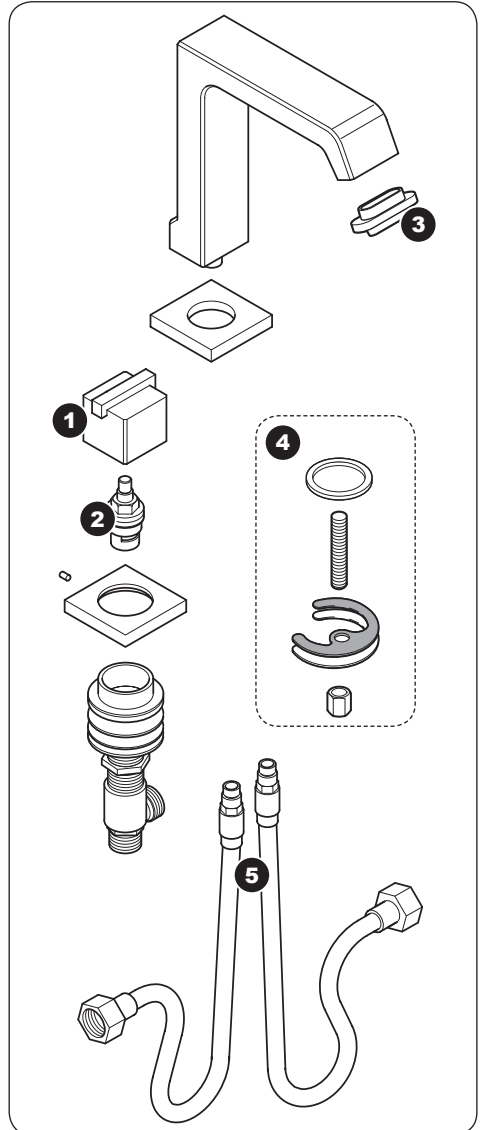
### WARNING!

**DO NOT use 'powerful' abrasive or solvent cleaning fluids when cleaning the shower as they may damage the fittings.**

**IMPORTANT:** DO NOT use abrasive or solvent cleaning fluids. The mixer unit should be cleaned using a soft cloth and warm water. Any stains should be removed using washing up liquid.

**SPARE PARTS**

<b>Ref.</b>	<b>Description</b>	<b>Part No.</b>
1.	Tap handle	83309350
2.	½ turn cartridge	86609260
3.	Anti-splash	83309400
4.	Basin tap fixing kit	83309440
5.	Flexi hose	83309430



## Service Policy

In the event of a complaint occurring, the following procedure should be followed:

- 1 Telephone Customer Service on 0870 067 3333 (0845 762 6591 in Scotland and in Northern Ireland), having available the model number and power rating of the product, together with the date of purchase.
- 2 Triton Customer Service will be able to confirm whether the fault can be rectified by either the provision of a replacement part or a site visit from a qualified Triton service engineer.
- 3 If a service call is required the unit must be fully installed for the call to be booked and the date confirmed. In order to speed up your request, please have your postcode available when booking a service call.
- 4 It is essential that you or an appointed representative (who must be a person of 18 years of age or more) is present during the service engineer's visit and receipt of purchase is shown.
- 5 A charge will be made in the event of an aborted service call by you but not by us, or where a call under the terms of guarantee has been booked and the failure is not product related (i.e. scaling and furring, incorrect water pressure).
- 6 If the product is no longer covered by the guarantee, a charge will be made for the site visit and for any parts supplied.
- 7 Service charges are based on the account being settled when work is complete, the engineer will then request payment for the invoice. If this is not made to the service engineer or settled within ten working days, an administration charge will be added.

## Replacement Parts Policy

**Availability:** It is the policy of Triton to maintain availability of parts for the current range of products for supply after the guarantee has expired. Stocks of spare parts will be maintained for the duration of the product's manufacture and for a period of five years thereafter.

In the event of a spare part not being available a substitute part will be supplied.

**Payment:** The following payment methods can be used to obtain spare parts:

- 1 By post, pre-payment of pro forma invoice by cheque or money order.
- 2 By telephone, quoting credit card (MasterCard or Visa) details.
- 3 By website order, [www.tritonshowers.co.uk](http://www.tritonshowers.co.uk)

## TRITON STANDARD GUARANTEE

Triton guarantee this product against all mechanical defects arising from faulty workmanship or materials for a period of five years for domestic use only, from the date of purchase, provided that it has been installed by a competent person in full accordance with the fitting instructions.

Any part found to be defective during this guarantee period we undertake to repair or replace at our option without charge so long as it has been properly maintained and operated in accordance with the operating instructions, and has not been subject to misuse or damage.

This product must not be taken apart, modified or repaired except by a person authorised by Triton. This guarantee applies only to products installed within the United Kingdom and does not apply to products used commercially. This guarantee does not affect your statutory rights.

### What is not covered:

- 1 Breakdown due to: *a*) use other than domestic use by you or your resident family; *b*) wilful act or neglect; *c*) any malfunction resulting from the incorrect use or quality of water or incorrect setting of controls; *d*) faulty installation.
- 2 Repair costs for damage caused by foreign objects or substances.
- 3 Total loss of the product due to non-availability of parts.
- 4 Compensation for loss of use of the product or consequential loss of any kind.
- 5 Call out charges where no fault has been found with the appliance.
- 6 The cost of repair or replacement of showerheads, hoses, riser rails and/or wall brackets or any other accessories installed at the same time.
- 7 The cost of routine maintenance, adjustments, overhaul modifications or loss or damage arising therefrom, including the cost of repairing damage, breakdown, malfunction caused by corrosion, furring, pipe scaling, limescale, system debris or frost.

**Customer Service:** ☎ 0870 067 3333

**Scottish and Northern Ireland  
Customer Service:** ☎ 0845 762 6591

**Trade Installer Hotline:** ☎ 0870 067 3767  
Fax: 0870 067 3334

[www.tritonshowers.co.uk](http://www.tritonshowers.co.uk)

**E mail:** [technical@tritonshowers.co.uk](mailto:technical@tritonshowers.co.uk)

Triton Showers  
Triton Road  
Nuneaton  
Warwickshire CV11 4NR

*Triton is a division of Norcros Group (Holdings) Limited*